



New Mexico State Land Office

Surface Resources Division (SRD)

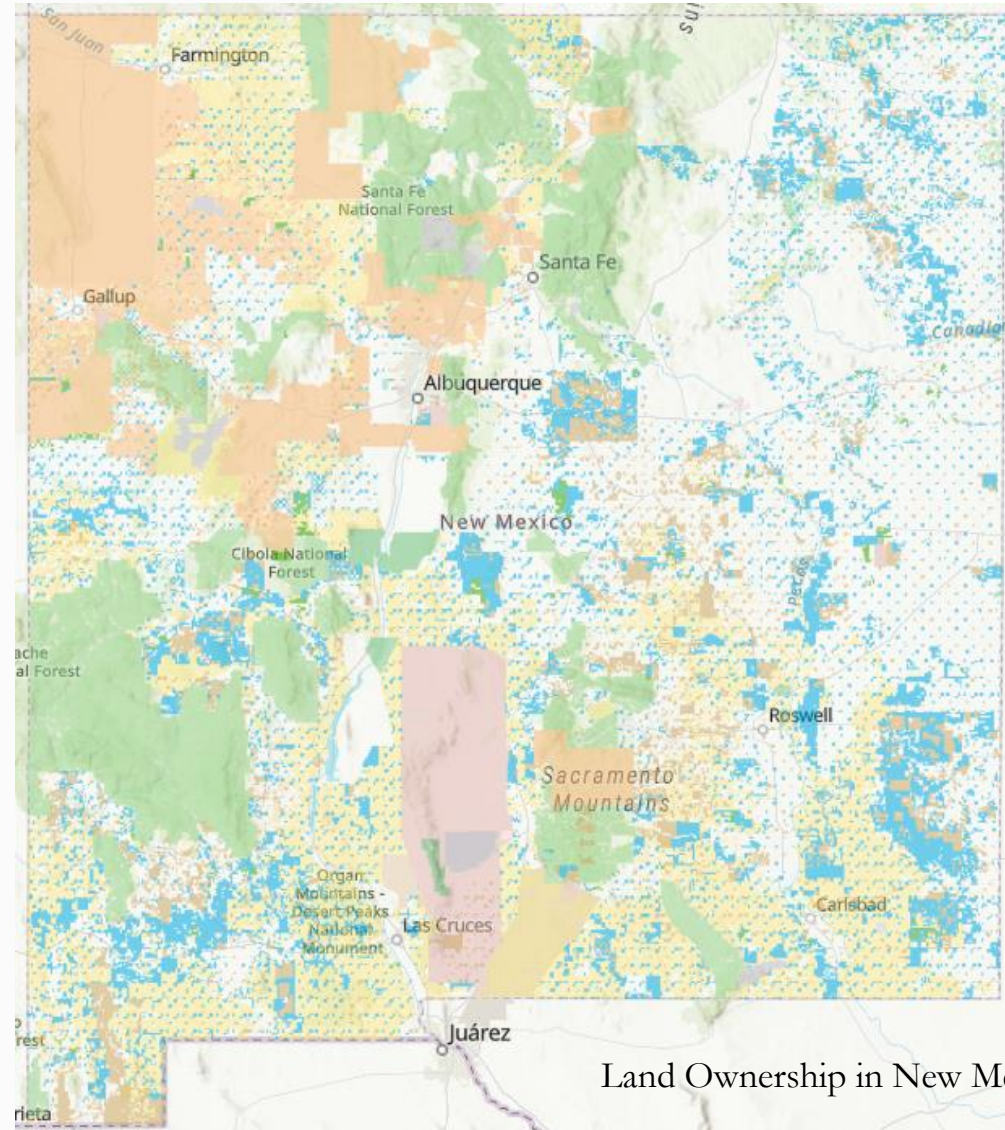
July 11, 2023



Photo by Megan Boatright

Priority Landscape Planning Introduction

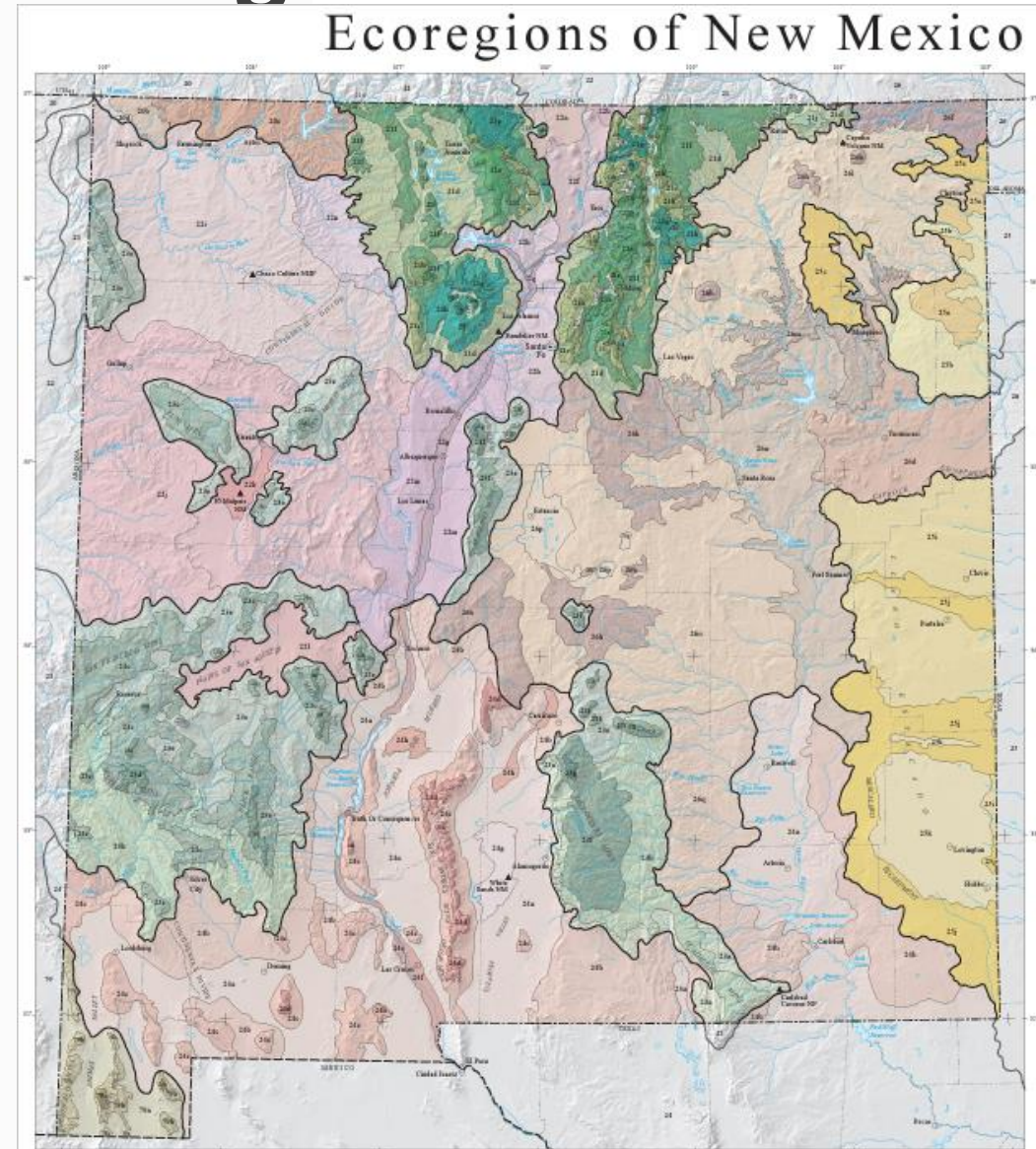
- 9 million surface acres and 13 million subsurface acres of STL
- Checker boarded ownership
- Climate and ecosystem variability, arid landscapes, biological and cultural diversity



Land Ownership in New Mexico

Priority Landscape Planning Introduction

- Ecological challenges: fire resilience, range health, public access, fragmentation
- Limited capacity to manage directly



Restoration Program Planning

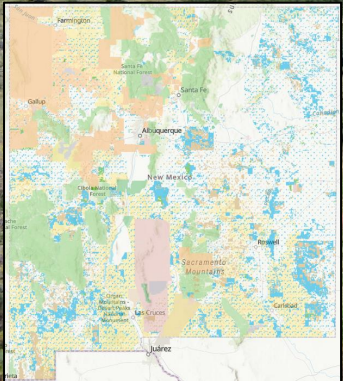
Project Planning Process and Goals

- ✓ Overview
- ✓ Challenges: large-scale work needed, legacy reclamation, small internal capacity and funding
- ✓ Program Goals
 - Restoration at landscape level
 - Responsiveness to immediate restoration needs
 - Promote working lands with functioning ecosystems
- ✓ Strategies
 - Funding and R&R Fund
 - Maximize co-stewardship and partnerships
 - Priority Landscapes
 - Demonstration Landscapes

Restoration Program Planning

Priority Landscapes

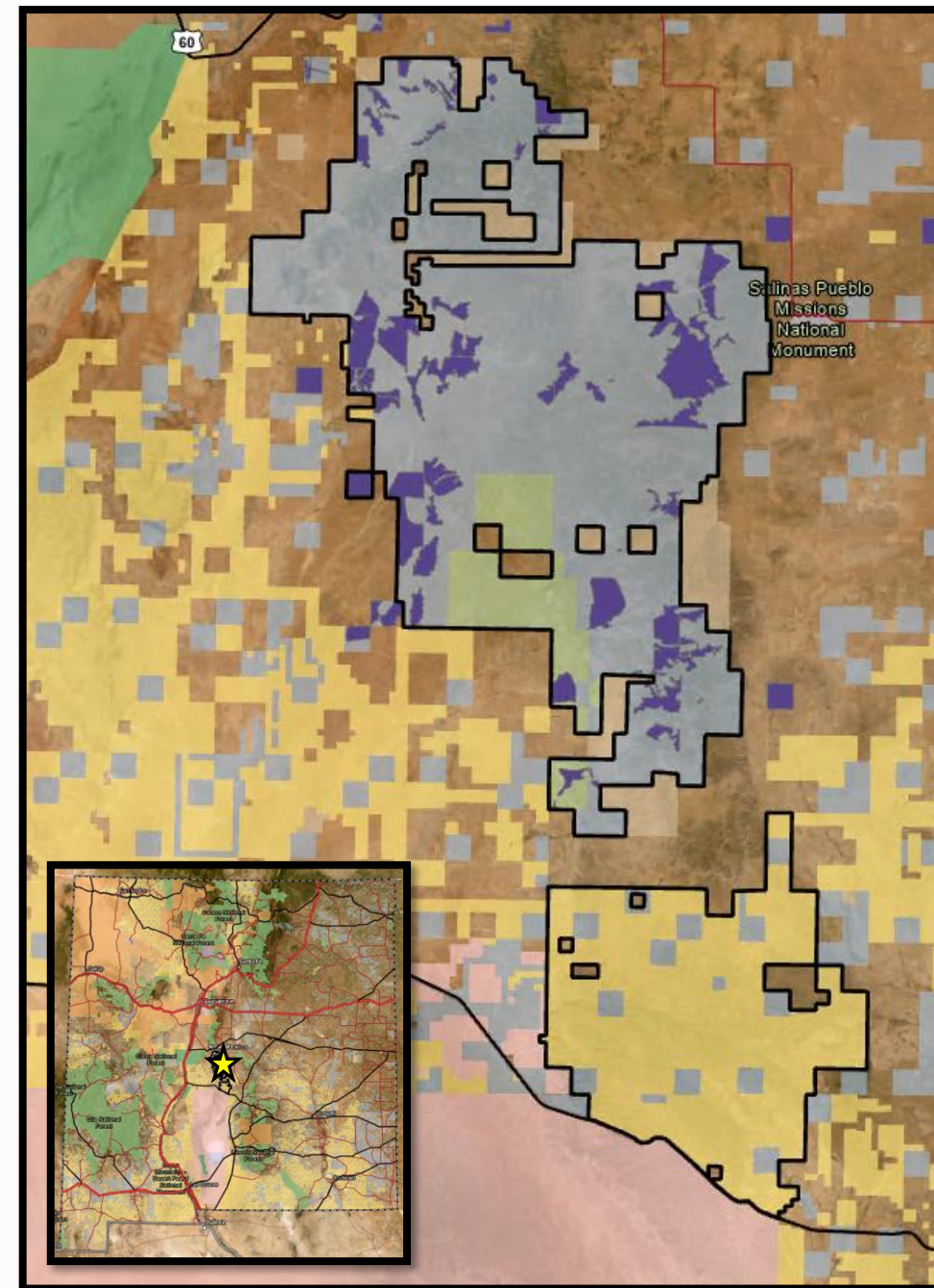
- ✓ Collaborative landscape selection and planning
- ✓ Concentrated effort and planning efficiency
- ✓ Promotes cross-boundary and partnership work
- ✓ Efficient monitoring



Restoration Program Planning

Demonstration Landscapes

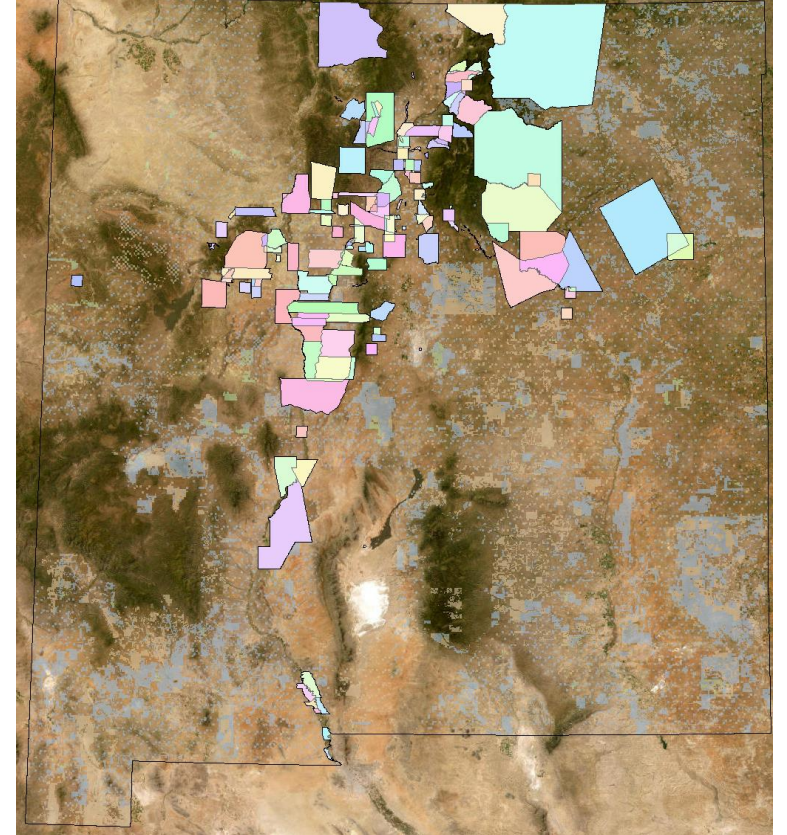
- ✓ Opportunities:
 - Approx. 3,500 unique grazing lessees
 - Alternative Leasing
- ✓ Strategy:
 - Build demonstration landscapes showcasing variety of replicated treatments differing by type, goals, planning processes, methods, etc.
 - Facilitate knowledge sharing to, and stewardship by, those on-the-ground
 - Connect to funders, experts, and each other
 - Potential for cost-share (via R&R Fund)
 - Invest in monitoring at landscape-scale → cumulative effects, outreach
- ✓ Next Steps



Community Fuelwood Projects

- **Partnerships**

- ✓ Local Land Grants
- ✓ Soil Water Conservation Districts
- ✓ State Forestry
- ✓ Taos Pueblo
- ✓ Taos County
- ✓ Land Grant Council



Community Fuelwood Projects

- **Funding The Fuelwood Projects**

- ✓ **Funding Sources**

- State Land Office
- State Forestry Division
- Soil and Water Conservation Districts
- Land Grant Council
- Taos County



Community Fuelwood Projects

Lessons and Successes

✓ Lessons

- San Juaquin de Rio Chama Project
- Ocate Community Fuelwood Project

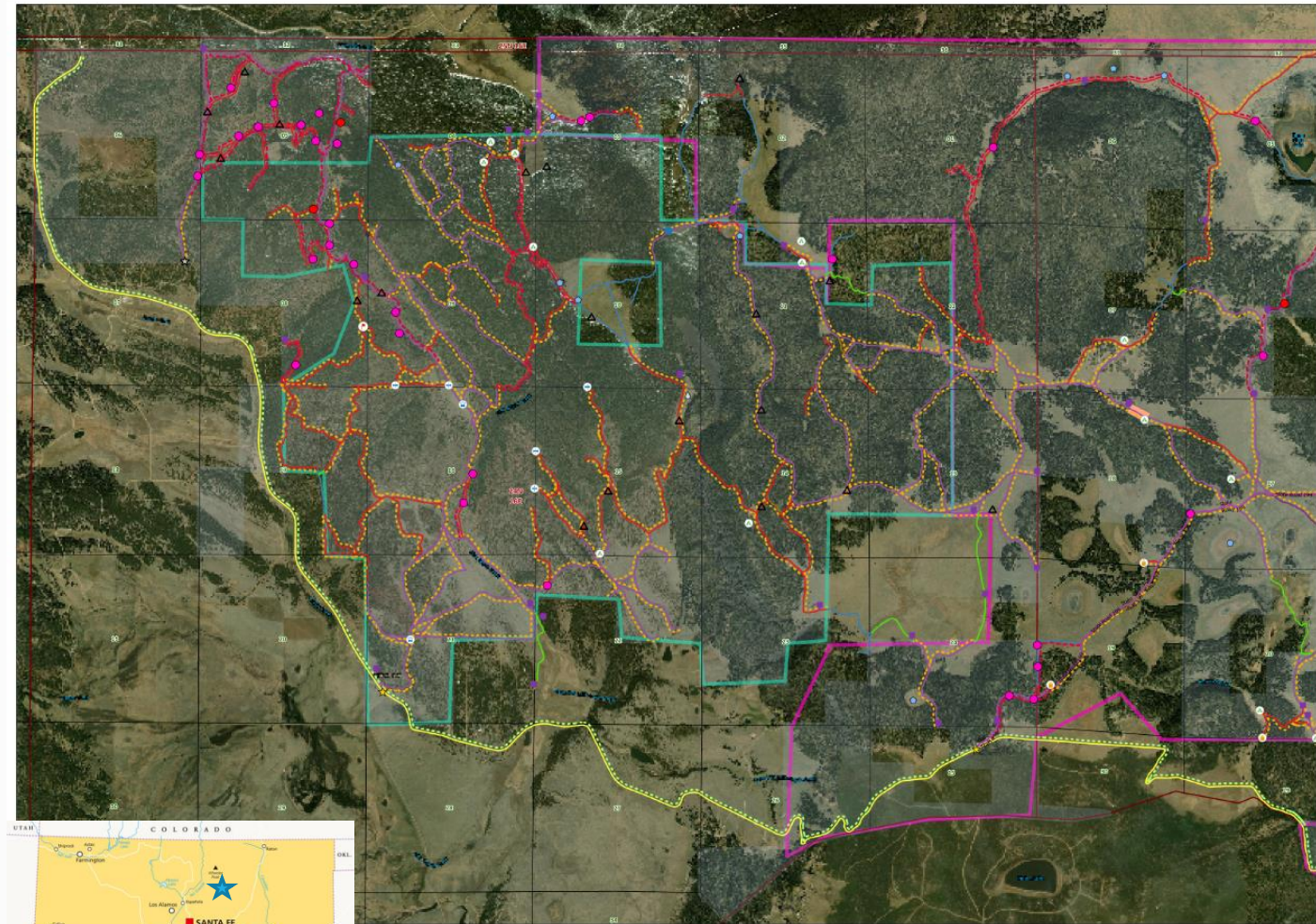
✓ Successes

- Clines Corner Fuelwood Project
- Santa Barbara Land Grant Mayordomo Project
- Bearcat Fuelwood Project works with 5 different Land Grants
- Villanueva Fuel Wood Project



White Peak Management Area

- ~55,000 acres of mixed conifer, ponderosa forest managed by NMSLO: large blocks of contiguous land interspersed with private inholdings
- Diverse interests in the landscape stem from historic uses:
 - Livestock grazing
 - Forestry
 - Hunting
- Primary Management Issues:
 - Fire risk management/Forest resilience
 - Road network
 - Stakeholder interests



White Peak Management Area

Strategic Planning Approach:

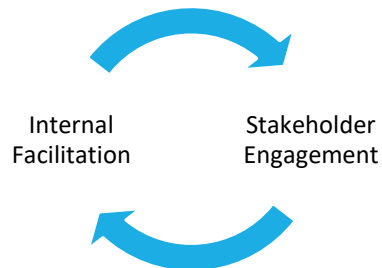
Create an iterative, organic process

- ✓ Identify Goals, Stakeholders, Uses, Partners, Constraints

- Forest Resilience, Recreation, Traditional and Historic Use, Sustainable Grazing Use

- ✓ Develop a Transportation Plan

- Scenario Mapping: Identify Critical Routes to Optimize Each Goal



Commissioner SGR visits a thinning unit that was burned in the 2022 Cook's Peak fire; resilience in the landscape is evident by regeneration of grasses and standing live ponderosa pine

White Peak Management Area

Progress

- Transportation inventory
- NMDGF road maintenance project
- Assess dispersed camping locations
- Cultural Resources Office outreach

Additional implementation ideas:

- Educational Land Stewards
- Instructive and interpretive signage
- Closures and seasonal access
- Potential partnership for site management



Grazing lessee's pup takes a break from helping rotational grazing operation

Alternative Leasing Strategies

NMSLO Mission: Generate Revenue **AND** Protect Resources in Perpetuity

Three Interrelated Ecological Problems:

- Climate Variability: GHG emissions, Carbon sequestration, Adaptive management
- Loss of Bio-Diversity: Habitat fragmentation and degradation
- Environmental Justice: Unequal distribution of the impacts of environmental harms

What is the Role of a Land Office?

Becoming Agents of Change

Leadership: Commitment & Opportunity

The Power to Convene: Create collaborative communities

The Power to Leverage Spending: Create Landscape Scale Change



Alternative Leasing Strategies

Traditional Leasing:

- Extractive Uses.
- Maximize profit.
- Layered, Multiple use.
- Wide variety of leasing instruments.



- Agricultural Leases
- ROWs
- Mining Leases
- Business Leases
- Oil and Gas Leases
- Water Easements
- Land Use Restriction Codes

New Activity Goals:

- Recreation: Public Access
- Restoration: Habitat, Connectivity
- Protection: Endangered Species
- Stewardship: Range and Forest Management
- Mitigation: Reducing total impact by balancing development and protection
- Enhance Ecosystem Services: Incentivize C sequestration and Water Quality Protections



Alternative Leasing Strategies

Challenges and Opportunities:

- Capacity
- Financing
- Instrument Flexibility

Pilot Projects:

- Rio Puerco: Long-term Riparian Restoration with an NGO
- Tharp's bluestar: Habitat protection with an oil and gas co.
- Continental Divide Trail: Long-term recreational access lease with NGO and BLM

Lessons Learned:

- Third Party Expertise: Collaborations
- Creative funding:
 - Sister agencies: Matching and Leveraging
 - Use outside markets
 - Grants and Donations and NGOs
- Fee Structure: Rationally related to leasing goals, not just lost extractive opportunity costs
- Simplify Instruments and Application:
 - Longer terms with provisions to review periodically
 - Prescriptive and Proscriptive





New Mexico State Land Office

Surface Resources Division (SRD)

Thank You.

Dana Vackar Strang, Assistant Commissioner of Surface

dvstrang@slo.state.nm.us

505-827-5723

Will Barnes, Deputy Director of Surface, Stewardship

wbarnes@slo.state.nm.us

505-827-5856

Kyle Rose, Assistant Director, Stewardship

krose@slo.state.nm.us

505-827-3827

Camilla Romero, Project Manager, Stewardship

cromero@slo.state.nm.us

505-827-5851

Mark Meyers, Forester, Stewardship

mkmeyers@slo.state.nm.us

505-827-4453

Bianca Gonzalez, Landscape Scale Planner

bgonzalez@slo.state.nm.us

505-827-5782